

# CSD 8.4 Release Notes

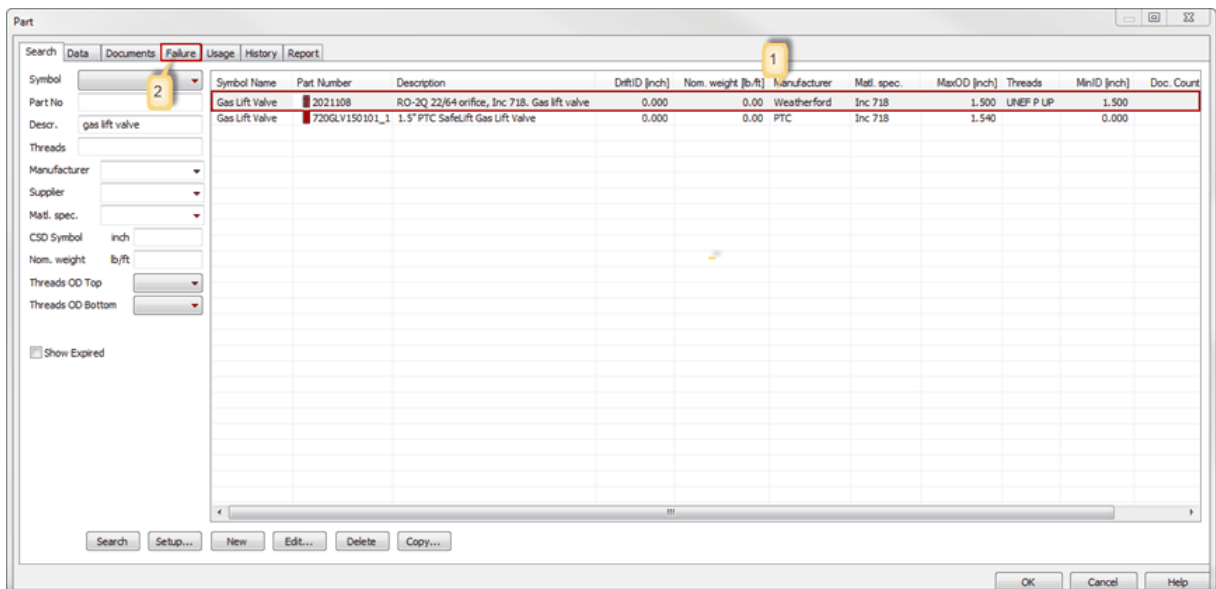
## Equipment failure registration

CSD 8.4 introduces equipment failure registration. Below is a description of the functionality:

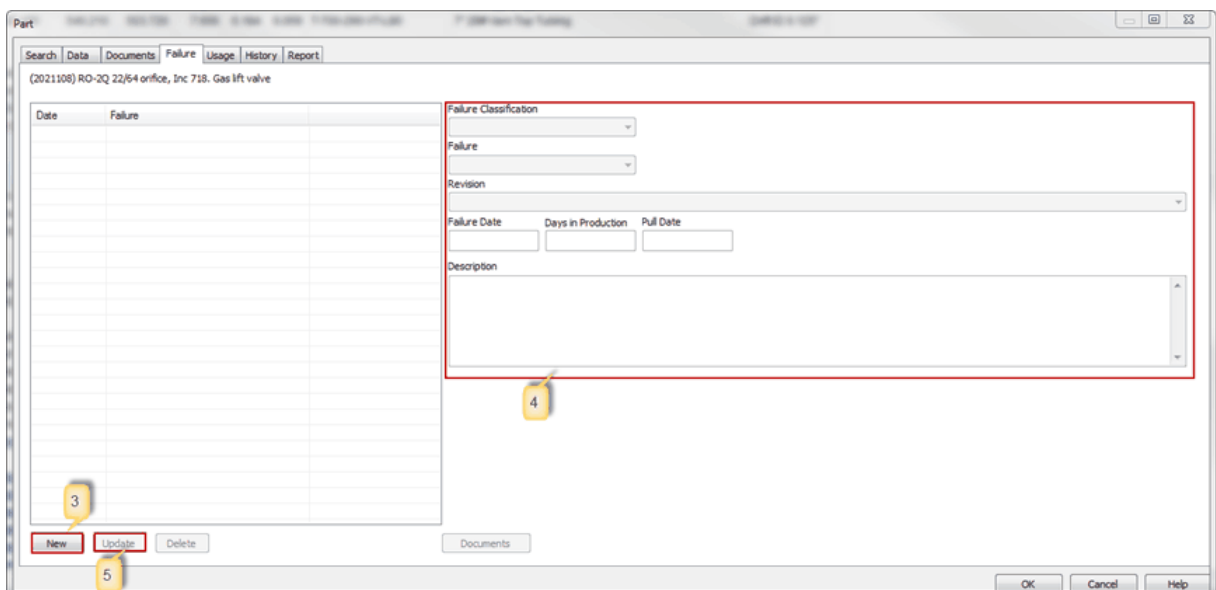
The Failure tab is open for all CSD users. Here you can register failure incidents on parts in the database.

To register a part failure:

1. Find the part you wish to edit.
2. Highlight it and choose the *Failure* tab.



The chosen part is indicated at the top left of the tab:

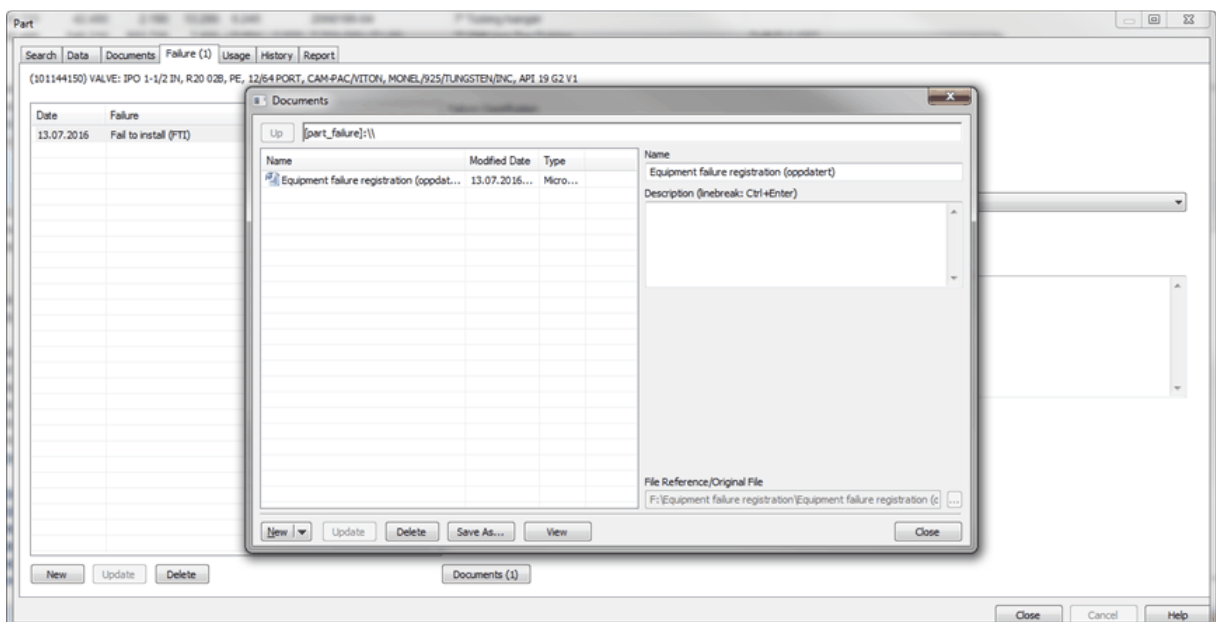


3. Select New.
4. Enter information regarding failure incident.

Input	Description
<b>Failure Classification</b>	Barrier breach or no barrier breach.
<b>Failure</b>	Type of failure.
<b>Revision</b>	Set revision where failure occurred. If a revision is already open in the background, this will appear as a suggestion.
<b>Failure Date</b>	Failure date of part. Today's date will appear as suggestion.
<b>Days in Production</b>	How many days part have been in production. Suggestion will appear automatically if operation finish date in revision is available and Failure Date is filled out.
<b>Pull Date</b>	Date when part was pulled out.
<b>Description</b>	Further information regarding the equipment failure incident.

5. Update.

Push the **Documents** button to add additional documents regarding the equipment failure. Users also have the option to provide additional comment regarding failure in the Description field.



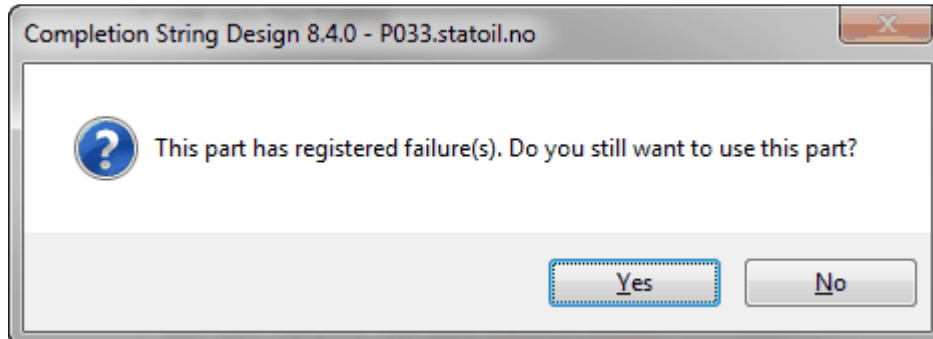
A part with registered failure(s) will show in red font, both in Part Explorer and Part:

Symbol Name	Part Number	Description	DriftL...	Nom. ...	Manufacturer	Matl. spec.	MaxO...	Threads	MiniD...	Doc. Count	Failure Count
Gas Lift Valve	101173995_2	1 1/2" TCBV Valve	0.000	0.00	Schlumberger	Inc 925	0.000	0.000			
Gas Lift Valve	101144150	VALVE: IPO 1-1/2 IN, R2...	0.000	0.00	Schlumberger	Monel	0.000	0.000			1
Gauge Carrier	101174137	7" 29# Gauge Carrier	5.995	29.00	Schlumberger	Inc 925	8.469	Vam ...	6.026		
Gauge Carrier ...	101146742	Dual gauge	4.653	20.00	Schlumberger	13 Cr-80	7.391	Vam ...	4.699		
Safety Valve	101177093_2	7" 29# SLB Slimtech DH...	5.995	29.00	Schlumberger	13 Cr5-95	8.900	Vam ...	6.000		
Safety Valve	101177093_1	7" 29# 13Cr-80 SLB slim...	0.000	29.00	Schlumberger	13 Cr-80	8.900	Vam ...	5.995		

Symbol	Part No	Symbol Name	Part Number	Description	DHID [inch]	Nom. weight [lb-ft]	Manufacturer	Matl. spec.	MaxOD [inch]	Threads	M-ID [inch]	Doc. Count	Failure Count
	1011	SPR	101128067	HANDREL: GAS LIFT/ 7 HSG-2INC 925, (2) REOLTS/SINGLE/SQUARE/FLUSH HOULT (0.500 X 0.454)PI 19...	0.000	29.00	Schlumberger	Inc 718	0.000	Vam Top HCP X P	0.000		
		Gas Lift Valve	101144150	VALVE: IPO 1-1/2 IN, R2 02B, PE, 12544 PORT, CAM FACTORY, MONEL 925, TUNING STEN, APC 19 02 Y 1	0.000	6.00	Schlumberger	Monel	0.000	0.000	0.000		1
		Gauge Carrier Dual	101146742	Dual gauge	4.653	20.00	Schlumberger	13 Cr-80	7.391	Vam Top HC 8 X P	4.699		
		Gas Lift Valve	101173995_2	1 1/2" TCBV Valve	0.000	0.00	Schlumberger	Inc 925	0.000	0.000	0.000		
		Gauge Carrier	101174137	7" 29# Gauge Carrier	5.995	29.00	Schlumberger	Inc 925	8.469	Vam Top HC 8 X P	6.026		
		Safety Valve	101177093_1	7" 29# 13Cr-80 SLB slimtech DHV	0.000	29.00	Schlumberger	13 Cr-80	8.900	Vam Top HC 8 X P	5.995		
		Safety Valve	101177093_2	7" 29# SLB Slimtech DHV	5.995	29.00	Schlumberger	13 Cr5-95	8.900	Vam Top HC 8 X P	6.000		

The Failure Count column indicates the number of failure incidents registered on the part.

When a user attempt to use a part with registered failure(s), a pop-up window appears to inform regarding failure registered on part:



## LAT Reference

In CSD 8.4, users are allowed to enter MSL (Mean Sea Level) to LAT (Lowest Astronomic Tide) value, and use this as a datum reference.

## Expired Date

Some of the CSD properties can now be marked Expired, causing the data to be hidden from the CSD users. This is a System Administrator feature, concerning data like Threads, Material, Manufacturer, Supplier etc.

## Save to Image(s)

Choosing Save to Image(s), enables the user to save the current Schematic or Sketch as images, dividing the well completion into multiple pages following the PDF print template.

### Completed backlog items:

ID	Title	State	Description
<a href="#">257</a>	Data modelling	Done	
<a href="#">258</a>	Document dialogs: When selecting ie a part that has no documents, the data fields in the dialog still shows some information	Done	
<a href="#">261</a>	Generate scripts	Done	create/alter scripts - dependencies scripts - sanity check scripts (0-code etc)
<a href="#">262</a>	Code cleanup: remove ETSLayout	Done	This will affect all scalable dialog boxes. Must make sure that they all work approximately as before
<a href="#">263</a>	Programming: failure input, codetable handling, and revision reason	Done	This includes: - dialogbox for Codetables - Failure Type - dialogbox for Codetables - Failure - dialogbox for Codetables - Revision Reason - tab in Part for Failure registration - attach failure documents with the document button in Failure tab (also show document count in button text) - dropdown in Save As dialog to choose revision reason - info-field in Open dialog with revision reason
<a href="#">266</a>	Store dates in ISO format in XMLs	Done	
<a href="#">267</a>	Remove ETSLayout library from project	Done	
<a href="#">268</a>	Update CMarkupMSXML to latest version	Done	- includes buying upgrade
<a href="#">269</a>	Symbol dialog memory leak	Done	
<a href="#">270</a>	Programming: inform user of failed parts in part dialog, part expolorer (item select)	Done	color coded text (entire row) in part dialog and part explorer - warning when using a part with registered failure - warning in error column of schematic
<a href="#">278</a>	Programming of equipment change reason	Done	
<a href="#">281</a>	Improve speed of loading wells and revisions in the open tree	Done	When there are many wells in a field, the loading of tree takes a&nbsp;long time. This is due to the loop running separate recordsets for loading sub-data. All this should be in one sql. For Access database, must use the old way.

<a href="#">293</a>	NPDID wellbore	Done	In the Code Tables, Wellbore dialog: Duplicate headings: Official Wellbore ID. The last of them should be named (Official) Wellbore ID Description. Add the following two columns to the WELLBORE table: OFFICIAL_WELLBORE_CODE, OFFICIAL_WELLBORE_NAME. The input fields should be in the Well & Completion Data dialog in the Wellbore code-table, next to the Wellbore Name field.
<a href="#">296</a>	Add text N/A to resource	Done	
<a href="#">300</a>	Clamps listed in table	Done	Include a clamps table, similar to the Control Lines table, in the CSD report and printout.
<a href="#">301</a>	Slight improvement of old CSketch	Done	
<a href="#">302</a>	CSD Symbol OD heading in Part dialog.	Done	In Database, Parts dialog: The header CSD Symbol should read CSD Symbol OD, alternatively SymbolOD.
<a href="#">306</a>	C++11 style iteration over CObList	Done	
<a href="#">307</a>	General refactoring	Done	
<a href="#">315</a>	Change header in Save As dialog	Done	In the Save As dialog: Change header from Save As Reason to Save reason
<a href="#">317</a>	Use dynamic_cast<CCSDDoc*>(…)	Done	
<a href="#">323</a>	Setup of columns in a grid	Done	In the Setup dialog, the pages where choosing columns for schemativ, part explorer and running list, should have a list of checkable items, instead of fixed check boxes
<a href="#">325</a>	Custom drawing should be done according to theme	Done	Should not use ie font color="#6f008a"
<a href="#">326</a>	Tabs in MainFrm does not show text in certain look styles	Done	
<a href="#">330</a>	When saving a mode, always stamp it with exe version	Done	Add database field COMPLETION_MODE.SAVE_VERSION
<a href="#">331</a>	Scale dialog boxes to the size it had last time	Done	this has been done for some dialog boxes previously; make sure it is done in base class
<a href="#">332</a>	Refactor CGridList to use CMFCGridCtrl as base class	Done	
<a href="#">334</a>	The new document button should not be sized down to content	Done	
<a href="#">335</a>	RATags will not be drawn if bottom less than top	Done	
<a href="#">338</a>	Print as picture(s)	Done	We use CSD in intervention quite a lot and 9/10 we need to snag a PDF file of the completion string and paste it into our programs. However, this technique reduces the visibility of information and we have to spend quite a lot of time in order to get it visible in the program.  Is it possible to have an icon in CSD just like having the completion string in PDF to also have it as a picture, preferably in GIF or PNG?